



Ozone & Cold Cathode Lighting

DATA SHEET neon convertor Type MINI 5020 k

- o Available in the following versions: *Standard, Dimmer, Flasher, Remote control*
- o Compliant with standard EN 61347-2-10 for the **L.V. Directive**
- o Compliant with standard EN 61000-3-2, EN 55015 3rd ed., EN 61547 for the **EMC Directive**
- o **Type B** converter in accordance with EN 61347-2-10 (protection against secondary ground fault leakage is required)
- o 230v. input, with Italian or Schuko plug and a 1,5m cable.
- o Output with 1m cable type **K** (as per EN 50143). Insulation in polyethylene and PVC. External diameter 4,5mm. Section 1mm²

Electrical data:

Input :

Voltage	Volt	230
Current	Ampere	0,2 maximum
Frequency	Hertz	50/60
Power	Watt	40 maximum
Power factor	λ	> 0.95

Input control : Remote control flasher 0 volt= on 5...10 volt DC(10mA)=off

Output:

Voltage	Volt	2.5 – E – 2.5KV rms maximum
Nominal load current	mA	20
Short circuit current	mA	25
Frequency	Hertz	24.000

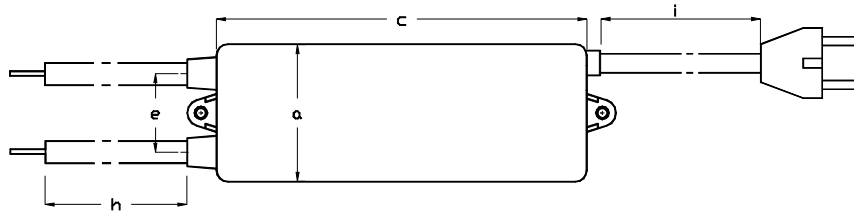
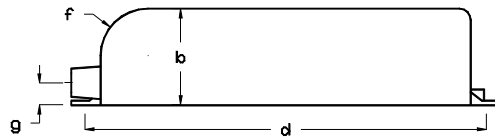
Performances:

- In compliance with *Flashers (0.5sec. delay at switching on)*
- Not compliant with *Dimmers*
- Suitable both for lamps loaded with argon + mercury gas as well as with 100% neon gas (lack of "bubble" effect and of mercury migration)
- Supplied with **open circuit protection, ground fault protection and protection against overloading**
- Maximum ambient temperature 40 c°
- Place 10mm far from metal surfaces

Indicative chart of maximum loading for electronic converters

For every electrode couple 50cm must be calculated.

	d.6mm	d.8mm	d.10mm	d.12mm	d.15mm	d.18mm	d.20mm
Argon	m. 5	m. 5.8	m. 6.5	m. 7.1	m. 7.8	m. 8.5	m.9
Neon	m. 3.8	m. 4,4	mt. 4,8	mt. 5	mt. 5,5	mt. 6	mt. 6,5

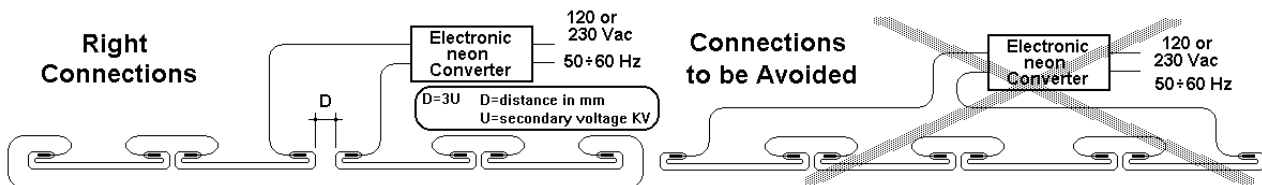


	a	b	c	d	e	f	g	h	i	weight
MINI	48	31	113	124	25	14	6	1000	1500	450 g

All dimensions are in mm.

INSTALLATION GUIDELINE

- To verify that the converter is not overloaded add to the lamps to be lit a 40 K Ω (11 watt) resistor. If tripping occurs, reduce the number of lamps to feed. To check for presence of installation problems, this test shall be performed when sign is finished.
- **For high voltage connections use the cable connected to the transformer with no further additions.**
- Keep the high voltage cables far from one another
- The lamps shall always be installed upon isolating supports: never lay the full length of the lamps upon any surface (including wood or chalk)
- Long life and reliability of the converter is assured by connecting in each installation one or more **SurgeDefenders (in the price list)** in the vicinity of the electric panel
- The converter must be, on all its' sides, **1 cm apart** from the metal surface.
- The converters must be at least **2 cm far** from one another.
- The distance between the lamps and parts with different potential (other lamps, current conductors, parts connected to earth) shall be suitable to the voltages on site which, at the frequencies produced by the converter, can discharge easily through air and unsuitable insulating material.
- The material of the supports of the lamps must be always insulating (EN 50107)
- To comply with the *electromagnetic compatibility* directive (EMC), from the output of the converter to the feeding supply, **avoid placing the feeding cable near the neon lamps and/or the high voltage cables.**



Ozonelux : Warranty conditions

Warranty by Ozonelux srl is limited to faults arising from the components and from the manufacturing process.

Faults caused by external sources such as surge condition, improper use of the device and similar not complying with what depicted within the instruction for use provided by Elettronica per Luce srl, are not covered by warranty.

Ozonelux srl provides a two year warranty: this two year guarantee period is from the manufacturing date mentioned on the converter.

The faulty unit shall be returned to Ozonelux carriage paid.

The liability of Ozonelux srl is limited to the sale price of the unit which is found faulty after the control by Ozonelux srl.

Design **Elettronica per luce**

TECNOLUX
GROUP