

Powers supply for cold cathode lamps.

Via Caravaggio 26 20033 Desio MI  
tel. +39 (0)362 630872 (a.r.) fax.+++ 620489

**DATA SHEET neon convertor Type SLIM 2040 – ND**  
*Not Dimmable*

- Compliant with EN 61347-2-10 for **LVT Directive**
- Compliant with EN 55015 3°ed ; EN 61547 for **EMC Directive**
- 230v. input, with 1,5m cable type 3x0,75 H05VV-F
- Output with 1,5m cable type **K**. (EN 50143)

Electrical data:

Input :                      Tension                      Volt 230 ac  
                                    Current                      Ampere 0,2 max  
                                    Frequency                  Hertz 50/60  
                                    Power                      Watt 45  
                                    Cos φ                      1.  
                                    Power factor              λ 0.95

Output:                      Tension                      Volt 1Kv - E – 1Kv rms max  
                                    Nominal load current    mA 40  
                                    Short circuit current    mA 48  
                                    Frequency                  Hertz 24.000

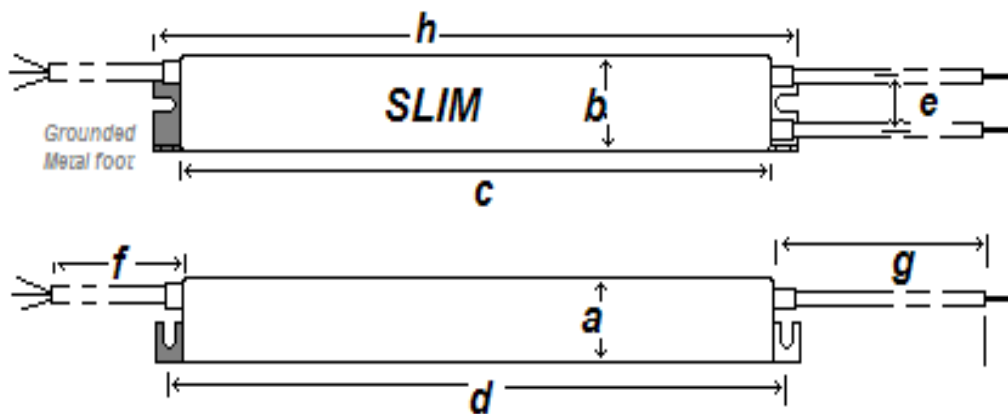
Performances:

- In compliance with external *Flashers (electronic or mechanical)*
- **not compliance with external Dimmers.**
- Suitable both for lamps loaded with argon + mercury gas as well as with 100% neon gas (lack of “bubble” effect and of mercury migration)
- Supplied with **open circuit protection** and **ground fault protection**
- Resistant up to *40 C° ambient temperature.*
- IP 65

Indicative chart of maximum loading for electronic converters

For every electrode couple 50cm must be calculated.

	d.8mm	d.10mm	d.12mm	d.15mm	d.18mm	d.20mm	d.25mm
Argon	mt 3,6	mt. 4	mt. 4,2	mt. 4,4	mt. 4,6	mt. 4,8	mt. 5,2
Neon	mt. 2,6	mt. 3	mt. 3,2	mt. 3,4	mt. 3,6	mt. 3,8	mt. 4

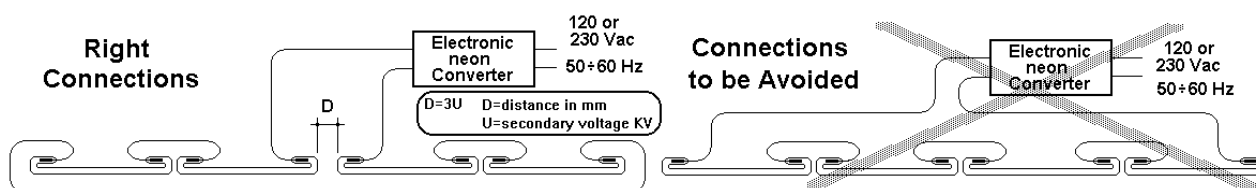


	a	b	c	d	e	f	g	h
SLIM	26 (-0+1)	32	186	195	16	1500	1500	208

All dimensions are in mm.

## INSTALLATION GUIDELINE

- The lamps shall always be installed upon isolating supports: never lay the full length of the lamps upon any surface (including wood or chalk)
- Long life and reliability of the converter is assured by connecting in each installation one or more **SurgeDefenders** in the vicinity of the electric panel
- The material of the supports of the lamps must be always insulating (EN 50107)
- To comply with the *electromagnetic compatibility* directive ( EMC), from the output of the converter to the feeding supply, **avoid placing the feeding cable near the neon lamps and/or the high voltage cables.**
- The material of the supports of the lamps must be always insulating (EN 50107)
- The distance between the lamps and parts with different potential (other lamps, current conductors, parts connected to earth) shall be suitable to the voltages on site which, at the frequencies produced by the converter, can discharge easily through air and unsuitable insulating material.



## E.L. Elettronica Per Luce: Warranty conditions

Warranty by Elettronica per Luce srl is limited to faults arising from the components and from the manufacturing process.

Faults caused by external sources such as surge condition, improper use of the device and similar not complying with what depicted within the instruction for use provided by Elettronica per Luce srl, are not covered by warranty.

Elettronica per Luce srl provides a two year warranty: this two year guarantee period is from the manufacturing date mentioned on the converter.

The faulty unit shall be returned to Elettronica per Luce carriage paid.

The liability of Elettronica per Luce srl is limited to the sale price of the unit which is found faulty after the control by Elettronica per Luce srl.

Designed by **Elettronica per Luce** s.r.l.

Via Caravaggio 26 - 20033 Desio (MI) - Italy - tel. +39 (0)362 630872 (a.r.) fax.+++ 620489

**ozoneLux**  
Ozone & Cold Cathode Lighting

**TECNO**LUX  
GROUP